

## THIENT Mash Bath TMB



## Mash Bath TMB



With the THIEMT Mash Bath TMB, individual mash methods are also realisable, beside the lab usual ones.

The standard programmes Hartong and Congress, described by MEBAC and EBC, are hard-preinstalled; an addition about further, individual programmes is possible, in an unlimited number.

### Advantages and benefits

- Complete stainless steel body: rust-free and stainless
- Design by ergonomic aspects: Relieved insight & access to stirrers and mash cups
- Possible individual programming
- High bath circulation: Temperature homogeneity in all sample chambers
- Automatic water dosage (TMB plus)
- Offset- and PowerCut functions by TQS
- Calibration of the water dosage quantity (TMB plus)

## Mash Bath analytics

The mash bath imitates the mash procedure in lab scale. The mash, obtained of this, will be taken to chemical technical assays. To receive correct, repeatable data, the parameters about temperature, stir rate and water quantity have to be determined and automated. It is possible with the TMB: Self-programmed- and standard methods are running by the touch of a button.



Standard method by MEBAC and EBC

### Congress-Method

- Mashing, by passing through a temperature programm
- Use of malt-fine grind and -coarse grind
- Detection of the absolute number of the extract content, by use of the Plato-Table.
- Identification of the saccharification time (Iodine-normality), protein content, viscosity a.o..

### Hartong-Method

- Mashing at constant temperature (20°, 45°, 65° or 80° C)
- Use of malt-fine grind
- Detection of ratio (VZ) = percentage share of the highest possible extract yield at the chosen temperature
- Conclusions about enzyme activity, protein solution and malting work by itself

## Appliance details

Functional design and a surface of high-quality stainless steel are two appliance features. The operation takes place, optionally, straight at the device or by the help of the TQS-Software at the pc. By individually allocable pre-selection keys, 6 programs will be dialed at the display, directly, the rest will be dialed manually. The sample chamber contains up to 8 cups.

### Functions

- Standard programs: Congress, Hartong
- Individual programs, infinitely storable and navigable
- Automatic temperature adjustment
- Temperature range: 20 to 80 °C
- Alert

### Versions

- TMB-08 eco with manual water dosage (Image top right)
- TMB-08 plus with automatic water dosage (Image down right)



## TQS – Individual Programming

The mash bath is usable and programmable by the TQS-Software. The standard programs Congress, Hartong 20, 45, 65 and 80 are pre-installed, individual programs can be appended in unlimited number.

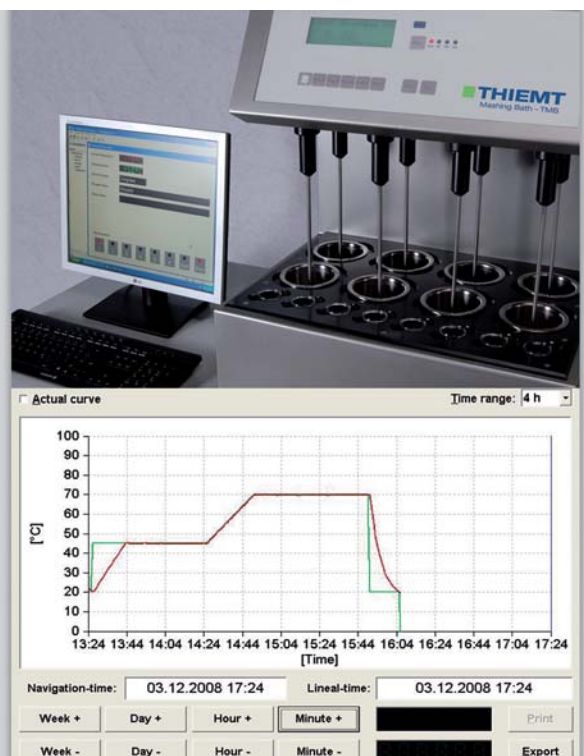
### TQS - functions

- Stir rate: Standard (100 respectively 200 rpm) or progressive (optional feature)
- Graphic evaluation of the temperature sequence
- Calibration water dosage (TMB plus)
- Power Cut
- Offset

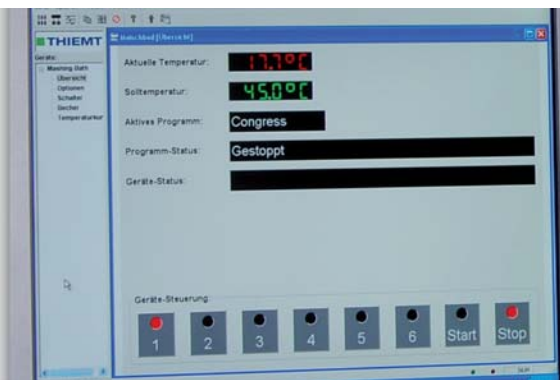
### Power Cut - functions

Depending on the preset, the device cuts the process after a power outage or continues independently. Furthermore, the maximum dead time can be specified within a test continuation is tolerated (optional feature).

Further informations: [www.thiemt.com/en/tqs](http://www.thiemt.com/en/tqs)



## References



## References – Abstract

- HABECO (Hanoi Beer Company), Vietnam
- Efes Moscow (Maltery Mutena)
- PROKON North (bioethanole producer)
- Malting plant Durst, Gernsheim/Germany
- Global Malt, Osthofen/Germany
- Avangard Malt, Bremen/Germany
- VLB (tentative- and academy Berlin/Germany)
- Inbev Russia (Tinkoff St. Petersburg)
- Cerveceria India, Puerto Rico

## Technical Information and order data

### Technical Information – Abstract

Sample cup:	8 itm. à 600 ml
Temperature range:	up to 80° C
Temperature consistency:	± 0,1° K
Temperature growth rate:	1° K pm
Rotation range:	
- Standard	100 resp. 200 upm
- individual adjustment	special function
Water dosage:	
- per glass cuvette TMB eco	50/100 ml
Heat output:	3 kW/3 kW
Weight:	56 kg
Overall dimensions (wxhxd):	
536 x 665 x 665 mm	
- with water connection a depth of	690 mm
Voltage:	
- Standard	230 V/50 Hz
- 60 Hz	230 V/60 Hz
Power consumption:	14 A

### Order data

Mash bath TMB-08 eco	T100.000
Mash bath TMB-08 plus	T100.001

Further informations: [www.thiemt.com/en/tmb](http://www.thiemt.com/en/tmb)

### Spare parts

1 Set (8 itm.) Congress stirrer	T100.073
1 Set (8 itm.) Hartong stirrer	T100.072
1 Mash cup	T100.036
1 Glass cuvette	T100.039

### Delivery contents Mash Bath TMB-08

1 Mash bath
1 Set (8 itm.) Congress stirrer
1 Set (8 itm.) Hartong stirrer
1 Set (8 itm.) mash cup
1 Set (8 itm.) glass cuvettes (only TMB-08)
1 Water inlet hose (1500 mm)
1 Water outlet hose (1500 mm)
1 Software TQS
1 Interface cable (3 m RS232)
1 Manual*

\* Please quote the type of the required power plug and manual language at the time of order.

### Packing data

Delivery ensued in a wooden box	
Dimensions (wxhxd):	700 x 700 x 900 mm
Weight:	108 kg

Indications without engagement - the THIEMT GmbH assumes the right to accomplish amendments at the configuration of the appliances.